

Kent County Council

Core Monitoring Report

Cabinet 20 June

Extracts for Specialist Children Services

**Including Information up to the end of
March 2011**



Contents

Description	Page	Previous Status	Current Status
Overall Summary of Performance	4		
Key to interpreting the data	6		
Council-wide Indicators			
Contact Kent : calls answered within 20 seconds		Green	Amber
Gateways		Provided for information only	
Complaints			
Staffing numbers (FTE)			
Staffing age profile		Amber	Amber
Staffing equalities – disability		Amber	Amber
Staffing equalities – ethnicity		Amber	Amber
Staff turnover		Information only	
Staff sickness absence		Amber	Green
CO2 emissions from KCC non-schools estate		Amber	Amber
CO2 emissions from schools		Red	Red
Children, Families and Education			
Foundation Stage pupil attainment		Amber	Green
Key stage 2 attainment – all children		Red	Red
Key stage 2 attainment – looked after children	7	Red	Amber
GCSE results – all children		Amber	Amber
GCSE results – children with free school meals		Red	Red
GCSE results – looked after children	8	Amber	Red
Young people not in education, employment or training		Green	Green
Secondary schools inspections		Green	Green
Primary schools inspections		Red	Red
Early years and childcare providers inspections		Amber	Green
Schools in special measures		Amber	Red
SEN assessments		Amber	Amber
Pupil exclusions		Amber	Amber
Pupil absence – secondary schools		Amber	Amber
Children’s Social Services			
Referrals to children’s social services	9	Red	Red
Initial assessments	10	Red	Red
Initial assessments completed within 7 days	11	Red	Amber
Core assessments within timescales	12	Red	Red
Children with child protection plan	13	Red	Red
Number of looked after children (LAC)	14	Red	Red
Social worker vacancies	15	Amber	Green
Asylum service – young people now aged 18+	16	Red	Red
LAC placed in Kent by other local authorities	17	Red	Red

Description	Page	Previous Status	Current Status
Adult Social Services			
Direct payments/Personal budgets		Amber	Green
Older people in residential care		Amber	Amber
Older people in nursing care		Amber	Amber
Domiciliary care for older people		Amber	Green
Learning disability residential care		Red	Red
Environment, Highways and Waste			
Household waste tonnage		Amber	Amber
Recycling/composting		Amber	Amber
Municipal waste taken to landfill		Green	Green
Congestion - Maidstone		Amber	Green
Freedom pass		Amber	Red
Routine highways repairs within 28 days		Amber	Red
Pothole repairs – average repair time		Red	Amber
Streetlight faults repaired - KCC		Amber	Amber
Streetlight faults repaired - UKPN		Red	Red
Road traffic casualties		Amber	Green
Communities			
Library visits		Amber	Amber
Library book issues		Red	Red
KCC apprenticeships		Green	Green
New entrants to the youth justice system		Amber	Amber
Young offenders in education, employment and training		Amber	Amber
Adult education enrolments		Green	Green
Drug users leaving treatment free of dependency		Green	Green
Supporting People – people achieving independent living		Amber	Amber

Overall Summary of Performance

This is our fourth Core Monitoring report for 2010/11. It provides information on key activity and performance for the fourth financial quarter, up to the end of March 2011.

The publication of this report is part of our transparency agenda, making the information and data we use as an organisation more open to public scrutiny.

The main concern in the financial year was the poor Ofsted report for our children's social services received in November. An Improvement Plan has been drawn up and various actions to improve the service are now underway. The improvement of services for vulnerable children is the top priority for the council and additional indicators relating to Children's Social Services have been added to the Core Monitoring report to ensure that the position and improvements are openly reported.

Overall performance for the indicators included in the current Core Monitoring is as follows:

RAG Status	Indicators in each category		
	Previous	Current	Net Change
Green	7	14	+7
Amber	29	21	-8
Red	17	18	+1
Total	53	53	

The following areas have shown improvement:

- Average days sickness for staff has reduced in the year
- Attainment for Kent children is now significantly better than the national average at Foundation Stage
- Ofsted inspection results for early years settings are also now better than the national average
- Attainment for looked after children at Key Stage 2 has improved and is now close to the national average
- Timeliness of initial assessments for children's social services has improved and is now closer to the Improvement Notice target
- Social worker vacancies have now been reduced to close to zero
- The percentage of adult social services clients with personal budgets and direct payments has reached the national target level
- Hours of domiciliary care for older people purchased from the independent sector during the year has come in within budget
- Average journey time in Maidstone morning peak hours has improved in the quarter compared to the same time last year
- Average time to repair potholes improved in the quarter and performance was close to target
- The numbers of people with serious injury in road traffic accidents in Kent has continued to reduce this year and the rate of reduction is ahead of the last published national average.

The following areas have shown a drop in performance:

- Response times for answering in-coming phone calls dropped below the national benchmark for the quarter

- GCSE results for looked after children have fallen significantly behind the national average and actions to address this are in the Improvement Plan
- The number of schools in special measures has again increased in the quarter and is above the national average
- Take-up of the Freedom Pass has been very successful and as a result has led to a budget pressure
- Response times for routine highway repairs have dropped in the quarter and remain below target.

The following areas have maintained a high level of performance:

- The percentage of young people aged 16 to 18 not in education, employment or training in Kent continues to be significantly below the national average
- The rate of good or better Ofsted inspection results for secondary schools continues to be ahead of the national average
- The percentage of household waste taken to landfill in Kent is significantly lower than the national average
- The number of apprenticeships provided by KCC continues to be ahead of target
- Adult education enrolments in Kent exceeded target for the year
- Success rates for drug treatment services continue to be significantly better than national average.

The following areas show performance continuing to be rated with a Red RAG status:

- Carbon dioxide emissions from schools have increased and our target for a 10% reduction by 2010 has not been met
- Pupil attainment at Key Stage 2 remains significantly behind the national average as do the related primary school Ofsted inspection results
- Attainment results for children with free school meals is significantly below the national average
- A range of indicators relating to children's social services from referral rates, to speed of carrying out core assessments to the numbers of children on child protection plans or looked after are below target levels set in the Improvement Plan
- The number of unaccompanied asylum seeker children, now aged over 18 and continuing to be supported by KCC continues to be above past levels
- The number of looked after children placed in Kent by other local authorities continues to be significantly higher than the average for other local authorities
- The number of adults with learning disability supported in residential care continues to be significantly above the national average resulting in budget pressures
- Average response times for repairing streetlights where the network operator is responsible continue to remain some way behind the target level
- The number of library book issues continues to be significantly below the national average.

Further details on these areas of concern and the actions to address them can be found in the main body of this report.

Katherine Kerswell
Group Managing Director
Kent County Council

General notes on interpreting the data included in this report

A selection of key indicators for the core areas of activity and performance of the council is included in this report. Indicator values are shown by graph and data tables, including Direction of Travel and RAG ratings (see tables below for a key to interpreting these).




A range of presentation styles are provided for different indicators depending on the information available. In some cases we provide the most recent results for the last four financial year quarters, while for other indicators we provide annual data for the last few years with the most recent quarter's data also shown.

Where relevant and available, the indicators are provided with comparative data showing national averages or other suitable benchmark information.




It should be noted that past annual data provided in this report is generally validated data which is public domain and available in many cases within the remit of national statistics.

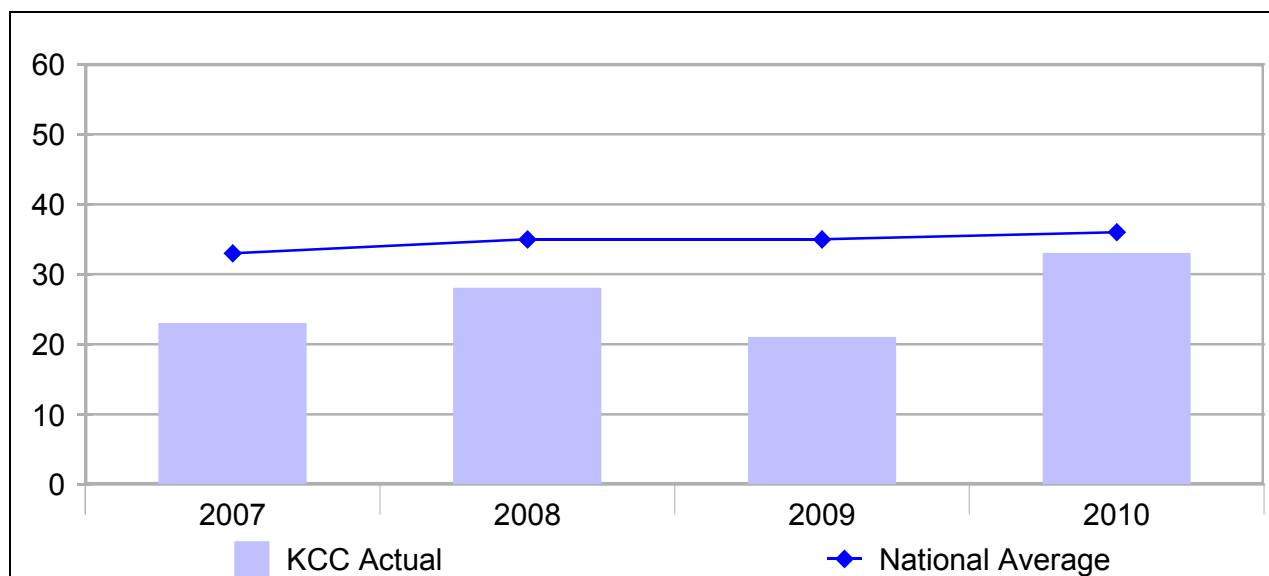
However, quarterly data provided in this report and all information subsequent to March 2010 is classed as provisional local management information which in some cases is provided on an estimated basis. This data is likely to be subject to future revisions.

Key to RAG (Red/Amber/Green) ratings

		RAG Ratings
Green		Performance is significantly better than the most recently published national average/benchmark or exceeds local targets where set or the indicator represents an activity which is performing within the budget allocation
Amber		Performance not significantly different from most recently published national average or close to but not exceeding local target or an activity which is performing close to the budget allocation
Red		Performance significantly worse than the most recently published national average or significantly behind local targets where set or the indicator represents an activity which is performing over the budget allocation provided
N/a		Data not available in order to assess performance

Key to DoT (Direction of Travel) ratings

		DoT Ratings
		Improvement in performance or change in activity levels with a positive impact on budgets and resources
		Fall in performance or change in activity levels with a negative impact on budget and resources
		No change in performance or activity levels

Percentage of 'children looked after' achieving level 4 or above in Key Stage 2 tests for both English and maths combined
Amber
 ↑


Higher result is better	Summer 2007	Summer 2008	Summer 2009	Summer 2010
KCC Result - LAC	23%	28% ↑	21% ↓	33% ↑
National average - LAC	33%	35%	35%	36%
RAG Rating	▲	▲	▲	●
KCC Result - All children	67%	69%	68%	70%
LAC cohort size	40	40	55	40

2010 results show an improvement in both English and maths attainment by 'looked after children'. This was most noticeable in maths with the latest result now slightly exceeding national performance. The improvement in the English result narrows the gap with national performance but remains some way behind.

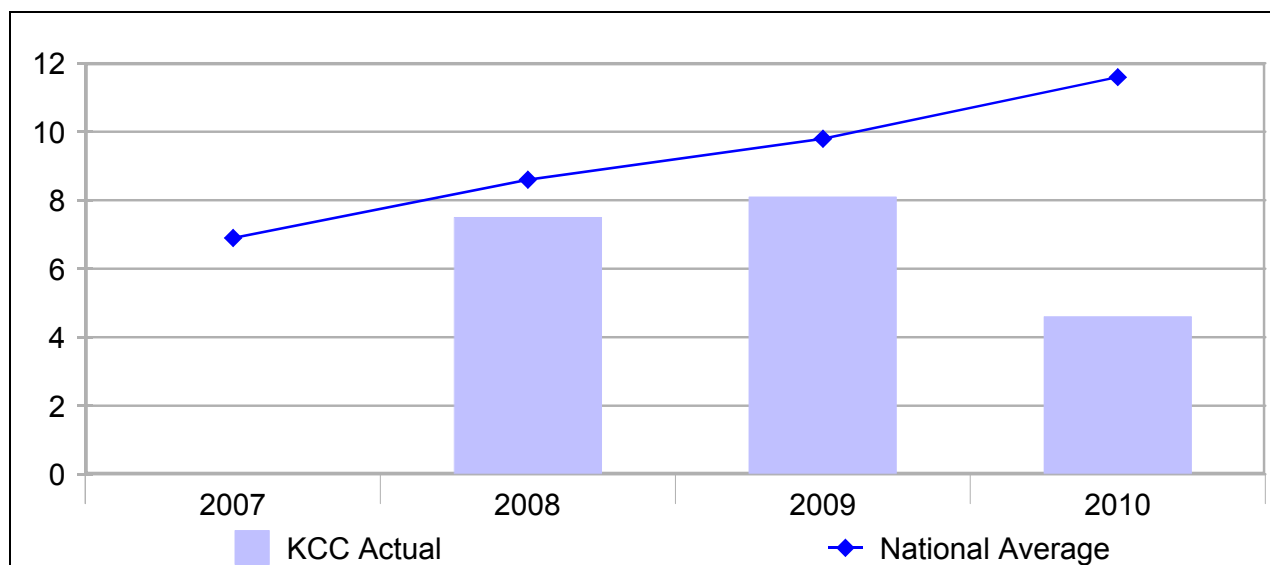
Attainment for looked after children was an area highlighted as in need of improvement in the 2010 Ofsted inspection. In response, actions are included in the Improvement Plan, including the aim to increase capacity in the education for looked after children team.

Data Notes:

- Source: DfE.
- Indicator relates to children looked after continuously for at least 12 months.
- Numbers of children are rounded to the nearest 5.
- Some eligible children did not sit the test in 2010 due to the boycott by some schools.

Percentage of looked after children achieving 5 or more A*-C GCSEs, including English and maths

Red
↓



Higher result is better	Summer 2007	Summer 2008	Summer 2009	Summer 2010
KCC Result	N/a	7.5%	8.1% ↑	4.6% ↓
National average	6.9%	8.6%	9.8%	11.6%
RAG Rating	N/a	●	●	▲
Number eligible to sit tests	110	105	110	130

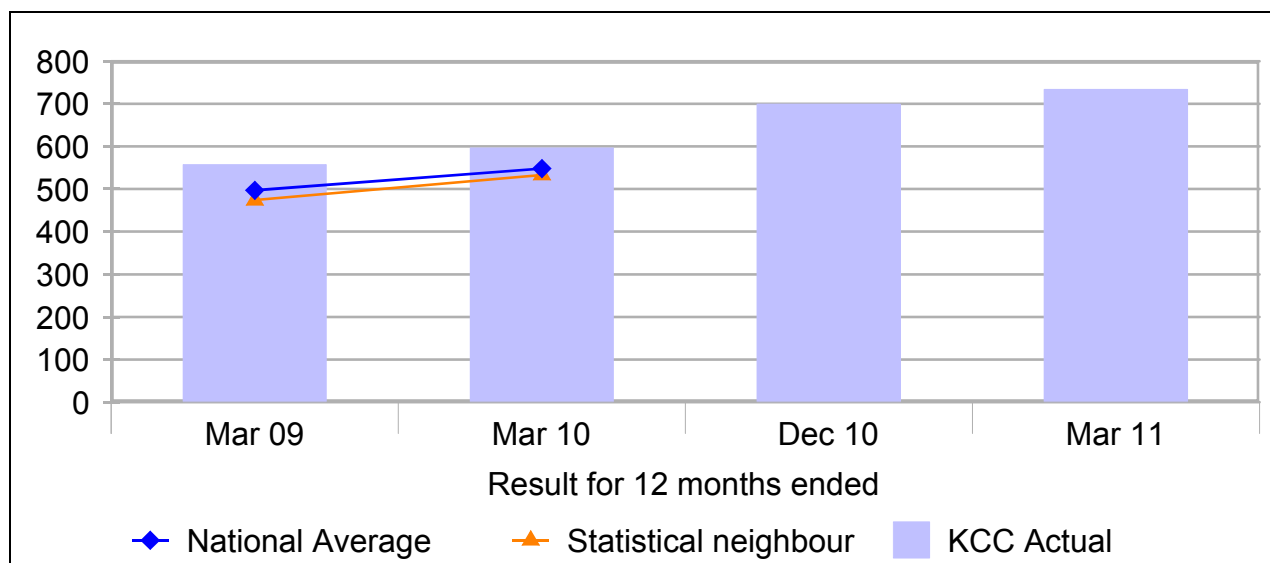
Achievement of looked after children in Kent at GCSE remains behind the national average, and includes a fall in the achievement of 5 or more A*-C grades. Although to put this in perspective, the drop in achievement is accounted for by only 3 less children failing to achieve the required standard.

Attainment for looked after children was an area highlighted as in need of improvement in the 2010 Ofsted inspection. Actions are included in the Improvement Plan, including the aim to increase capacity in the education for LAC team. Other actions include:

- The creation of the Virtual School Kent (VSK) offers opportunities to improve service delivery and outcomes. The agreement that the VSK should give priority to looked after children focus's the limited resources available.
- The multi agency nature of the VSK and the development of partnerships with agencies sitting outside of it, enables better access to other services which impact upon children's learning e.g. speech and language services and CAMHS.

Data Notes:

- Source: DfE.
- Indicator includes children looked after continuously for at least 12 months.
- Numbers of children are rounded to the nearest 5.
- Data for Kent 2007 was suppressed as the count of children with good results was less than 5.

**Referrals to children's social services
per 10,000 children aged under 18**
Red
 ↓


Lower result is better	Year ended Mar 09	Year ended Mar 10	Year ended Dec 10	Year ended Mar 11 Provisional
KCC Result	557	596 ↓	693 ↓	734 ↓
National average	497	548	N/a	N/a
RAG Rating	▲	●	▲	▲
Statistical neighbours	474	533	N/a	N/a
Number of referrals	17,400	18,600	21,800	22,800

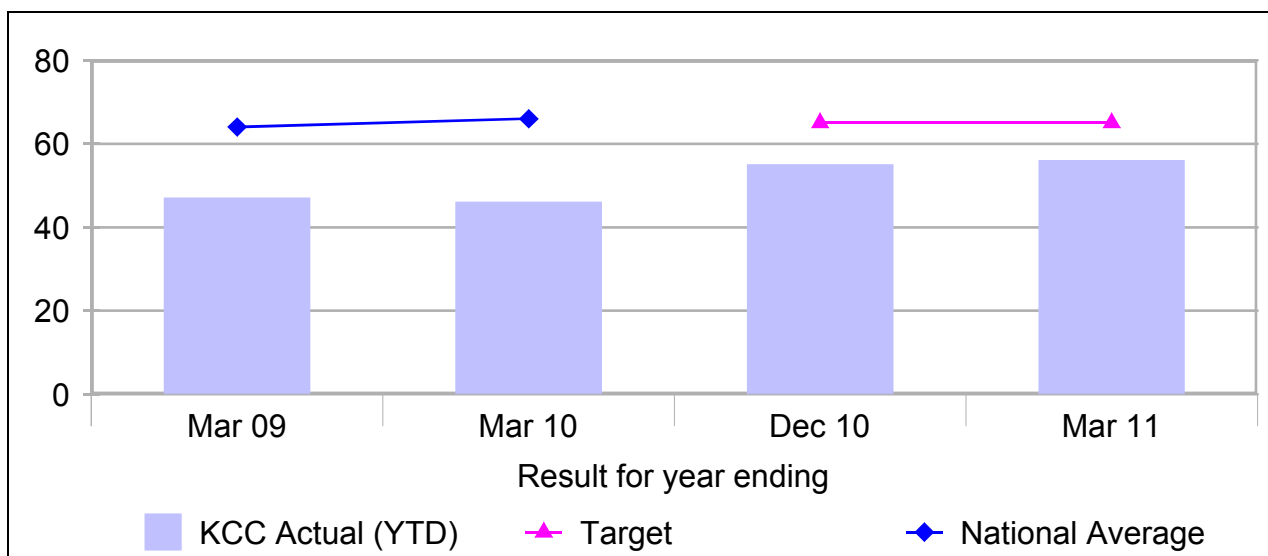
The rate of referrals to children's social services in Kent continues to increase, up 23% on last year and 6% since December 2010, and the levels seen this year are significantly above the last published national rate.

Actions being taken to address this issue are detailed in the Improvement Plan.

Data Notes:

- Source: DfE and Management Information Unit, KCC.
- The data for the year to March 2010 is based on the new Children in Need (CIN) census. The results should be treated with caution as this is the first full year of the CIN census.
- Referral numbers rounded to nearest 100.
- The RAG ratings for December 2010 and March 2011 are based on comparison to the most recently published national average – March 2010.

Percentage of referrals to children’s social services which progress onto initial assessment	Red ↑
---	-----------------



	Year to Mar 09	Year to Mar 10	Year to Dec 10	Year to Mar 11
KCC Result	47%	46% ↓	55% ↑	56% ↑
Target			65%	65%
National average	64%	66%	N/a	N/a
RAG Rating	▲	▲	▲	▲

The number of referrals entering the service continues to be high and whilst the percentage of referrals progressing to initial assessment has slightly improved it continues to be below the targets established in the Improvement Notice.

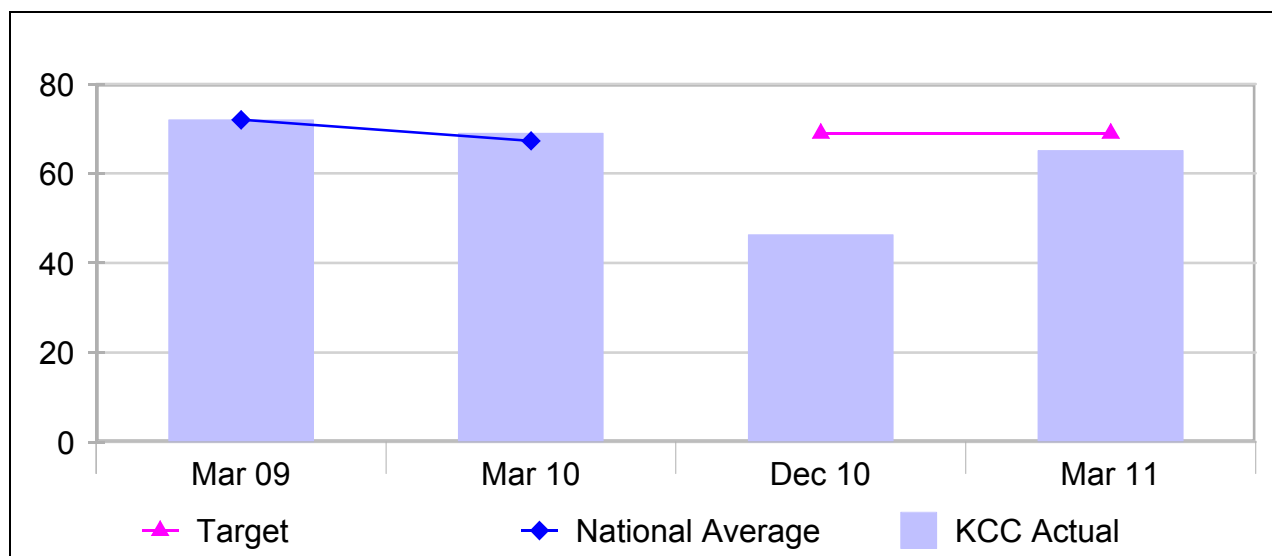
Actions to redress the balance between the number of referrals accepted and the number of initial assessment undertaken is outlined in the Improvement Plan

Data Notes:

- Source: Management Information Unit, KCC.
- It is difficult to quantify where good performance lies – it is assumed that the ideal is a median position neither too high nor too low.

Percentage of initial assessments completed within timescale (7 days from referral)

Amber
↑



Higher result is better	Year to Mar 09	Year to Mar 10	Qtr to Dec 10	Qtr to Mar 11 Provisional
KCC Result	72%	69% ↓	46% ↓	65% ↑
Target			69%	69%
National average	72%	67%	N/a	N/a
RAG Rating	★	●	▲	●

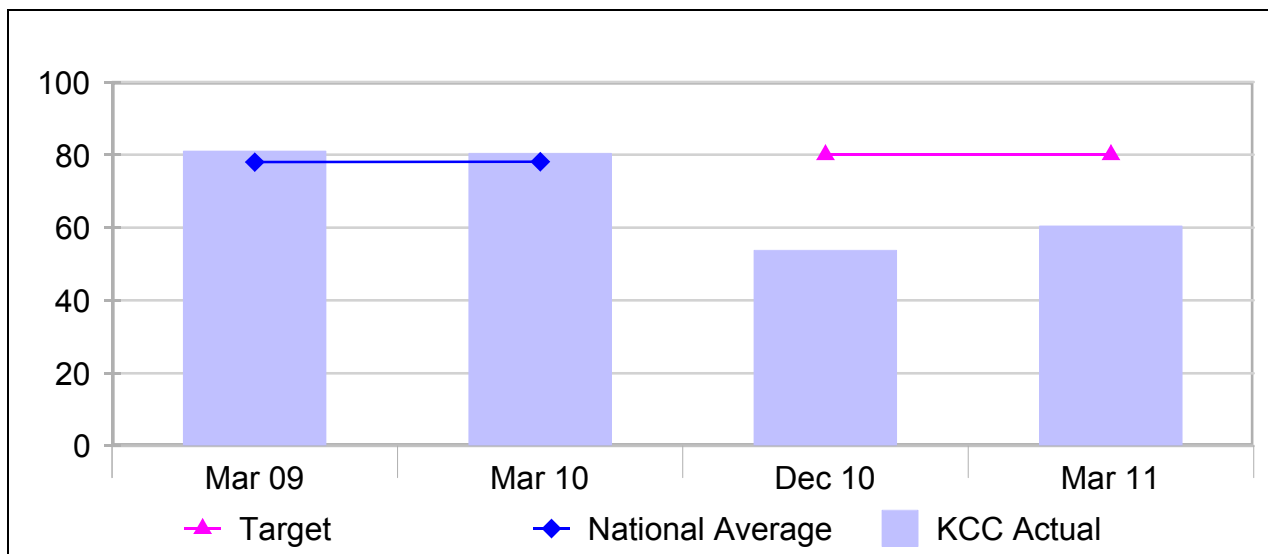
Whilst this indicator shows an improving picture and a narrowing of the gap with the Improvement Notice target, the indicator will be subject to fluctuation. The management of outstanding Initial Assessments has and will continue to have a negative effect on the indicator until this work is completed.

Actions in respect to the management of outstanding Initial Assessments and restoring timely throughput in the system are detailed in the Improvement Plan.

Data Notes:

- Source: Management Information Unit, KCC.

Percentage of core assessments completed within timescale	Red ↑
--	-----------------



Higher result is better	Year to Mar 09	Year to Mar 10	Qtr to Dec 10	Qtr to Mar 11 Provisional
KCC Result	81%	80% ↓	54% ↓	60% ↑
Target			80%	80%
National average	78%	78%		
RAG Rating	★	★	▲	▲

Whilst this indicator shows an improving picture in the later part of the year, the percentage of Core Assessments undertaken within timescales is below the target established in the Improvement Notice. The management of outstanding Core Assessments has and will continue to have a negative effect on the indicator until this work is completed.

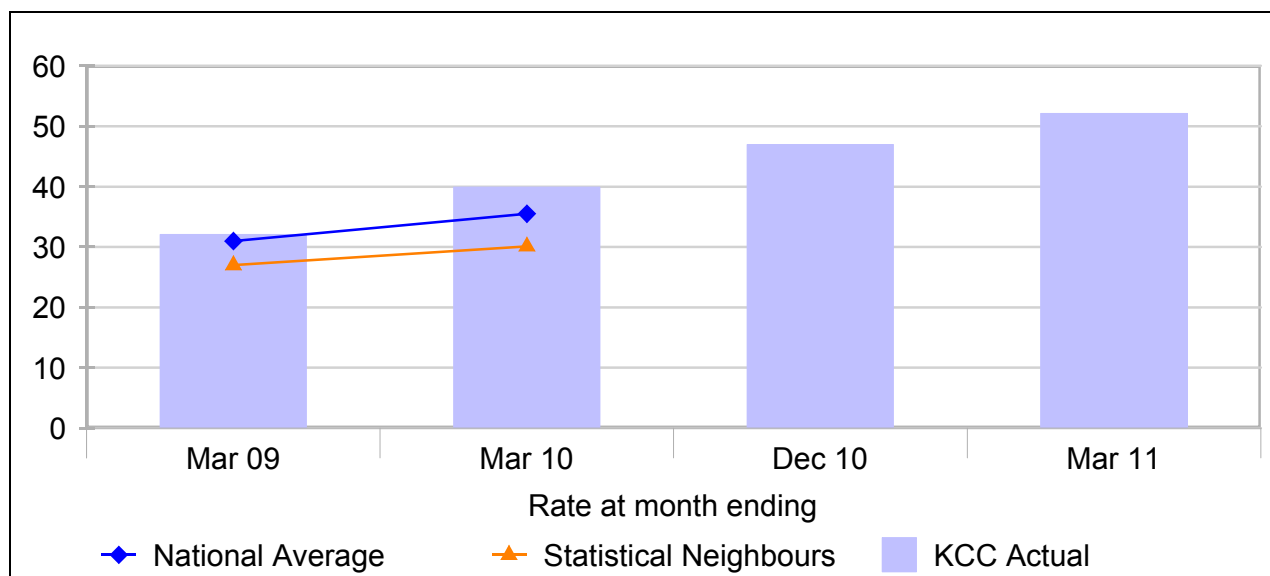
Actions in respect to the management of outstanding Core Assessments and restoring timely throughput in the system are detailed in the Improvement Plan.

Data Notes:

- Source: Management Information Unit, KCC.

**Number of children with a child protection plan
per 10,000 children aged under 18**

Red
↓



Lower result is better	As at end of Mar 09	As at end of Mar 10	As at end of Dec10	As at end of Mar 11 Provisional
KCC Result	32.1	39.9 ↓	47.0 ↓	52.1 ↓
National average	31.0	35.5	N/a	N/a
RAG Rating	●	▲	▲	▲
Statistical neighbours	27	30.1	N/a	N/a
Children with plans	1,000	1,240	1,470	1,620

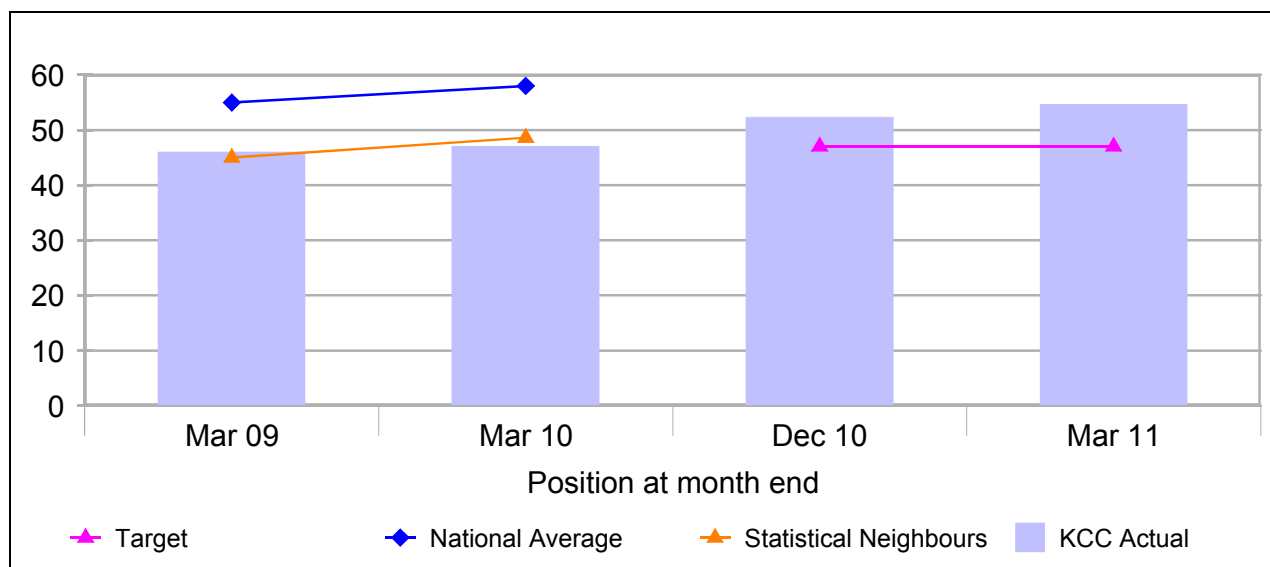
The number of children subject to a child protection plan continues to increase, being 31% up on last year, and 11% since December. The current position is 47% above the last published national average for March 2010.

Action being taken is detailed in the Improvement Plan and includes: a review of current cases where children have been subject to a child protection plan for over 18 months; strengthening child protection and conference processes, including core assessments, reports and multi-agency working; work to strengthen KSCB functions, and the independent chairs quality assurance function to ensure that cases are robustly managed and to drive forward planning.

Data Notes:

- Source: DfE and Management Information Unit, KCC.
- The data for the year to March 2010 is based on the new Children in Need (CIN) census. The results should be treated with caution as this is the first full year of the CIN census.
- Number of children rounded to nearest 10.
- The RAG ratings for December 2010 and March 2011 are based on comparison to the most recently published national average – March 2010.

**Number of children looked after per 10,000 children,
(including unaccompanied asylum seeker children)**
Red




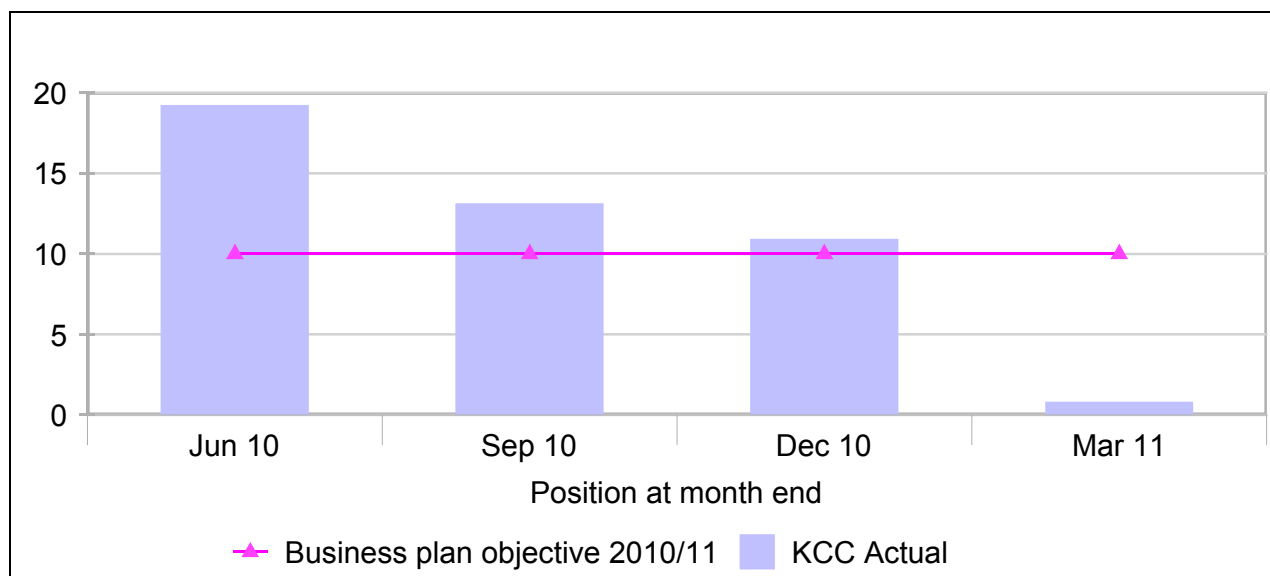
Lower result is better	As at end of Mar 09	As at end of Mar 10	As at end of Dec 10	As at end of Mar 11 Provisional
KCC Result	46	47 ↓	52 ↓	55 ↓
Target	47	47	47	47
RAG Rating	★	●	▲	▲
National average	55	58	N/a	N/a
Statistical neighbours	45	49	N/a	N/a
Number of children	1,415	1,455	1,630	1,700

The numbers of looked after children (LAC) in Kent continue to increase with the rate up by 17% since last year, and by 4% since December 2010. This brings the rate up to above the last published figure for statistical neighbours and close to the last published national average.

Actions in response to the increasing number of LAC children entering the system and the ongoing service delivery and permanency planning and tracking of LAC children is outlined in the Improvement Plan and the LAC strategy.

Data Notes:

- Source: DfE and Management Information Unit, KCC.
- Number of children rounded to nearest 5.
- Performance for this indicator is now assessed against a target level based on the rate at March 2010, and was previously based on comparison to national average.
- Unaccompanied asylum seeker children are also now included within this indicator whereas previously only British resident children were included.

**Children's social worker vacancies (caseholding)
as a percentage of establishment posts**
Green



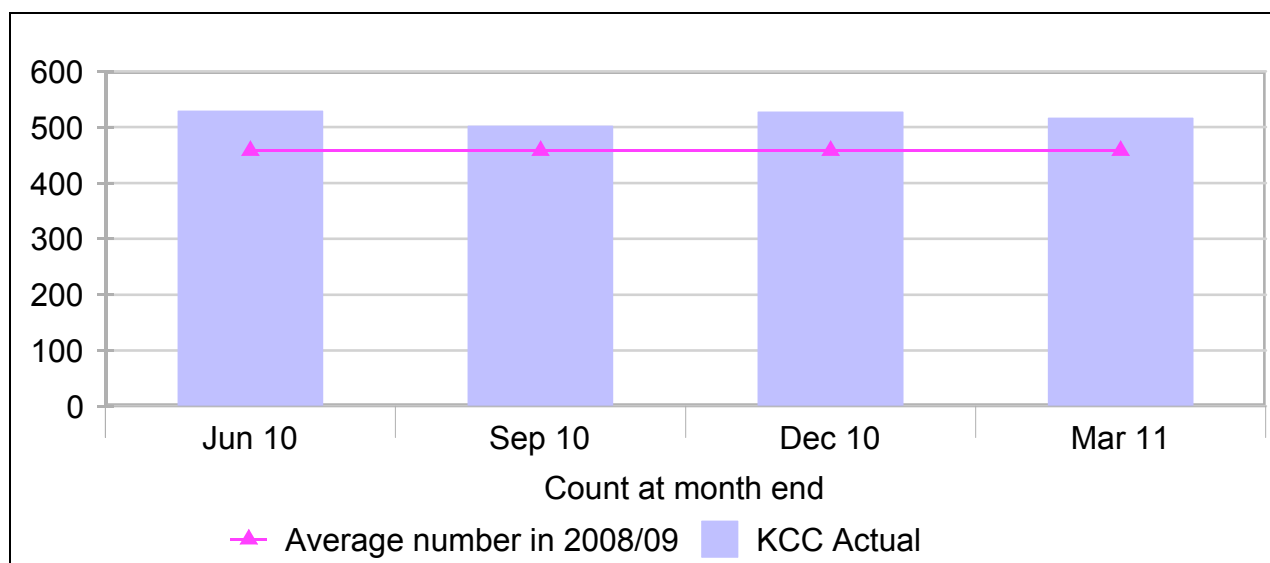
Lower result is better	As at end Jun 10	As at end Sep 10	As at end Dec 10	As at end Mar 11
KCC Result	19.2%	13.1% ↑	10.9% ↑	0.8% ↑
Plan 2010/11	10%	10%	10%	10%
RAG Rating	▲	●	●	★
Posts held by agency staff	5.5%	6.0%	8.8%	16.1%
Posts held by directly employed qualified staff	75%	81%	80%	83%

Social worker vacancies have declined following the recruitment strategy which has attracted newly qualified social workers and social workers from overseas. A number of posts are held by agency staff to ensure staff levels reach establishment staffing levels.

Actions in response to workforce issues are contained in the Improvement Plan.

Data Notes:

- Source: Management Information Unit, KCC.

Number of unaccompanied asylum seeker children supported by the local authority, who are now aged 18 and above
Red


Lower result is better	As at end of Jun 10	As at end of Sep 10	As at end of Dec 10	As at end of Mar 11 Provisional
KCC Result	529	502 ↑	527 ↓	516 ↑
2008/09 Average	458	458	458	458
RAG Rating	▲	▲	▲	▲

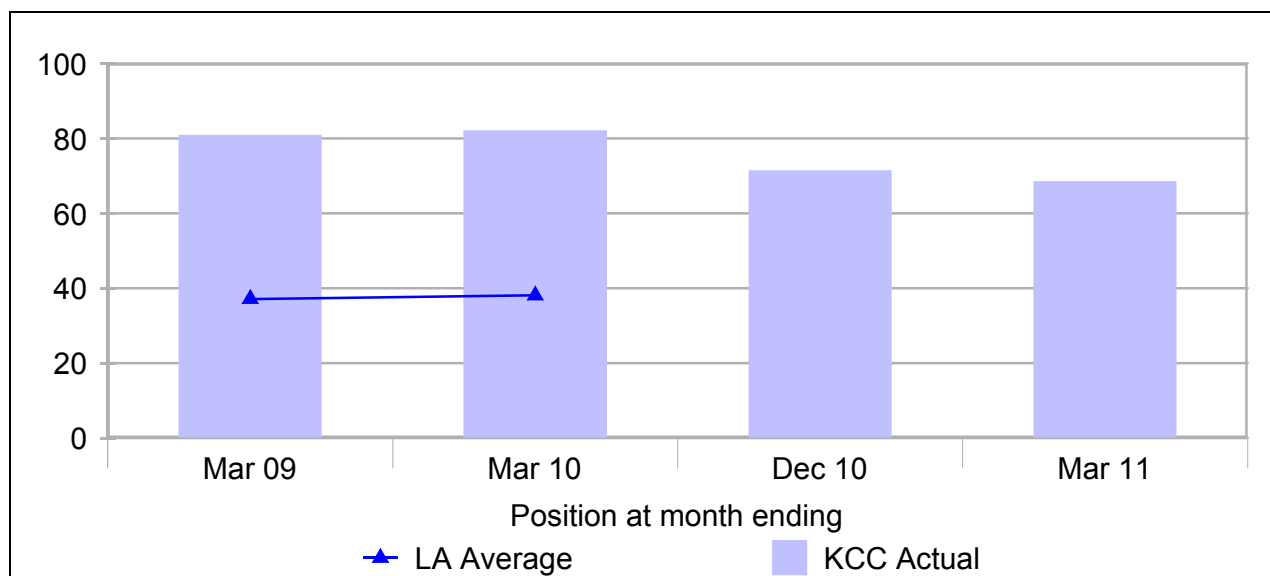
The numbers of UASC aged over 18 supported by the KCC has fluctuated during the year and as at March was at a similar level to the previous year (519 in March 2010), which is higher than previous historic levels. However, the total number of UASC of all ages supported has been on a reducing trend, which in the longer term will help reduce numbers aged over 18.

The decision making process regarding returning unaccompanied minors to their originating home country is made by the Home Office and therefore is not within the local authority's power to influence. The new regulations and guidance being issued by Government under volume 3 of the Children Act 1989, from April 2011, means that unaccompanied asylum seeking children will lose their rights as care leavers once their entitlement to remain in this country has been removed. This will mean that the local authority will have reduced responsibilities for them, even while they remain living in this country.

It was agreed with the UK Border Agency (UKBA) that the local team would work in partnership with KCC to prepare young people for their return to their country of origin, for those who are classified as having All Rights of Appeal Exhausted (ARE). This is still in the early stages of development due to restructuring of UKBA locally.

Data Notes:

- Source: Management Information Unit, KCC.

Children looked after placed in an area by other local authorities, as a percentage of the number of local looked after children
Red
↑


Lower result is better	As at end Mar 09	As at end Mar 10	As at end Dec 10 Provisional	As at end Mar 11 Provisional
KCC Result (DfE data)	80%	80% ↔	71% ↑	69% ↑
Local authorities (LA) average	37%	38%	N/a	N/a
RAG Rating	▲	▲	▲	▲
Numbers placed in Kent (local data)	1,400	1,420	1,385	1,385

The number of children placed into Kent by other local authorities remains high when compared with the average rate of placements into other areas. The rate shows a reduction this year but this is mostly due to an increase in the numbers of local looked after children, with only a small reduction in numbers placed into Kent by other local authorities.

The new sufficiency duty starting from 1 April 2011 requires local authorities to secure, where reasonably practicable, sufficient accommodation in their local authority area. It is unclear how far this will alter current practice.

Data Notes:

- Source: DfE and Management Information Unit, KCC.
- Numbers of LAC rounded to nearest 5.
- The RAG ratings for December 2010 and March 11 are based on comparison to the most recently published national average – March 2010.
- Kent local data shows a higher number than DfE data, as local data includes those placed who are over 18 years old (i.e. care leavers).